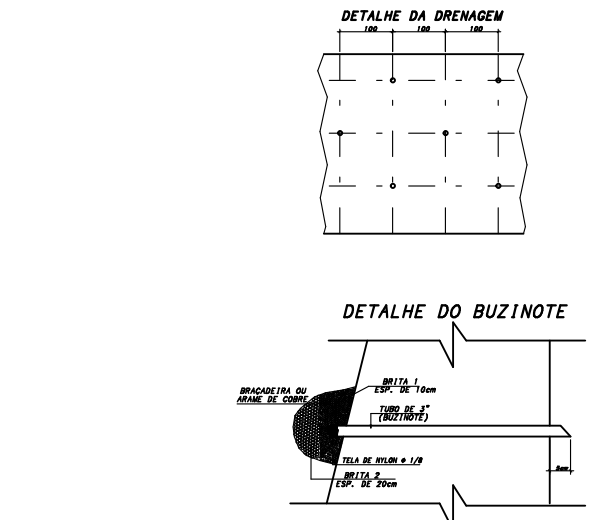
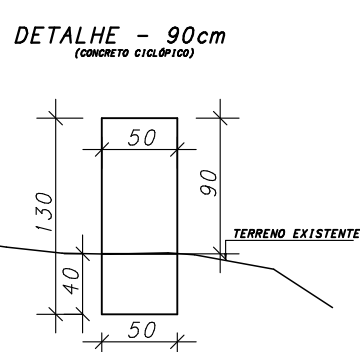
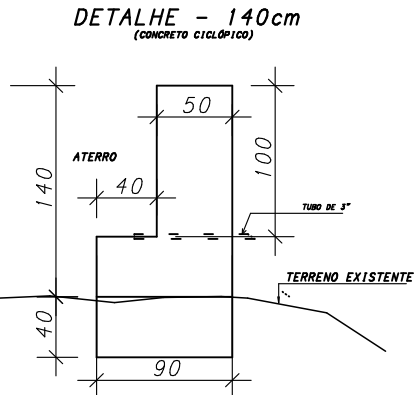
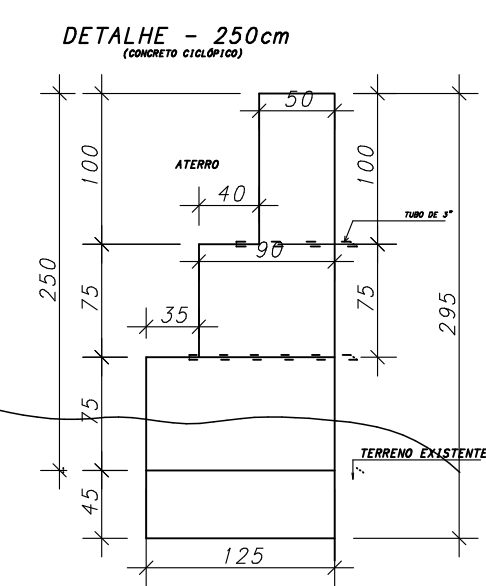
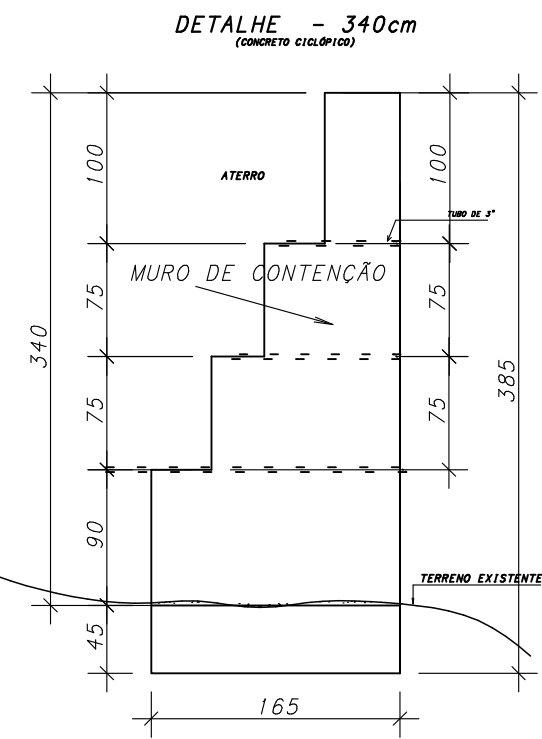
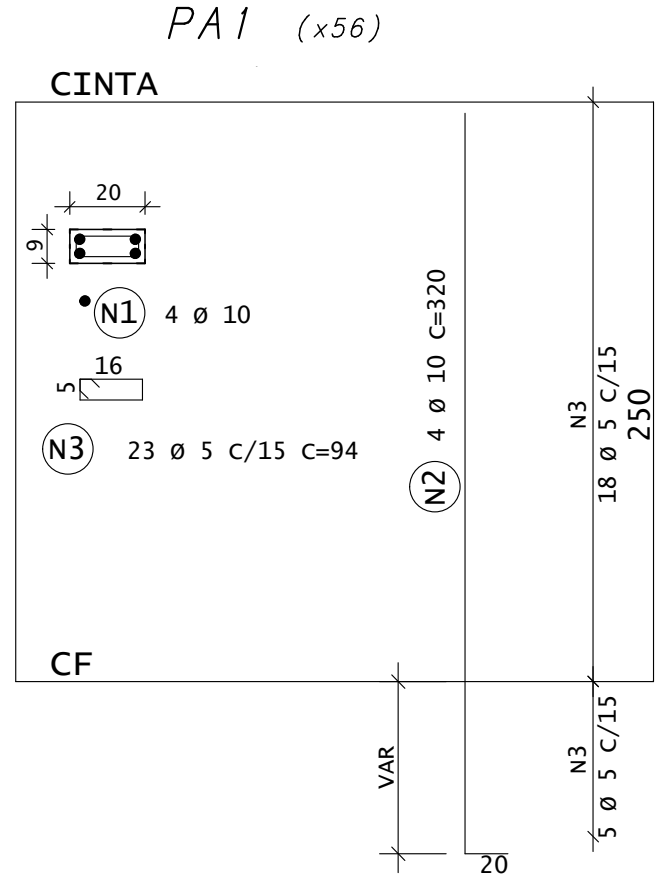
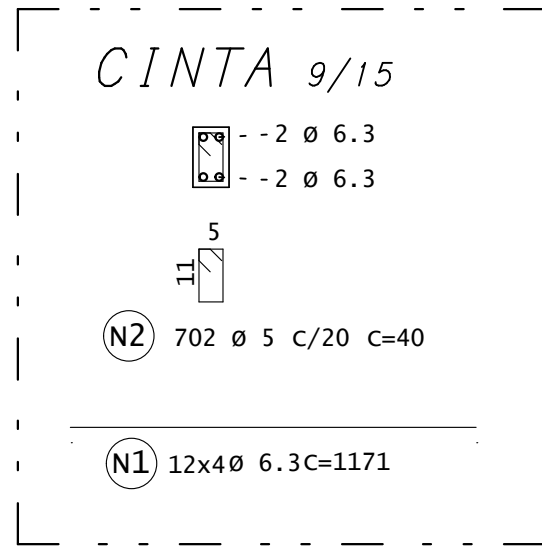
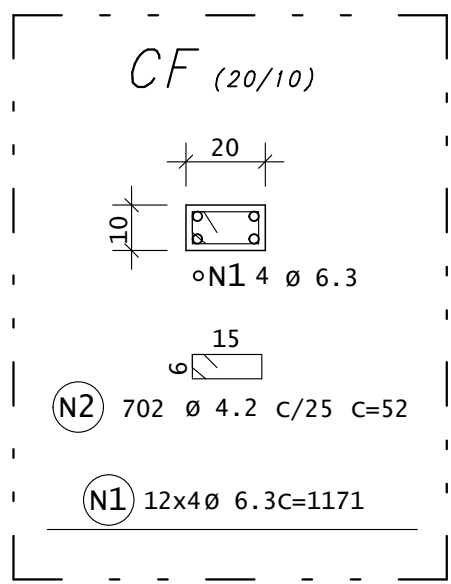
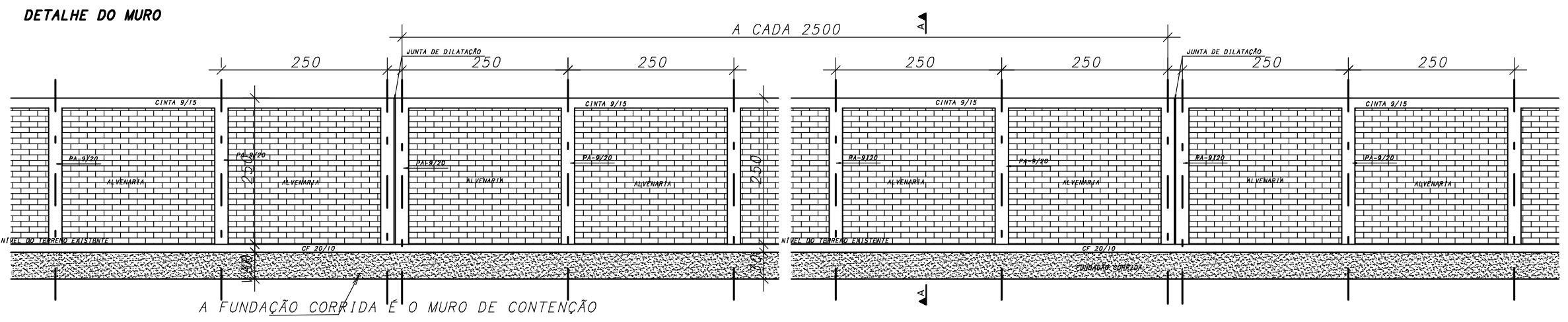
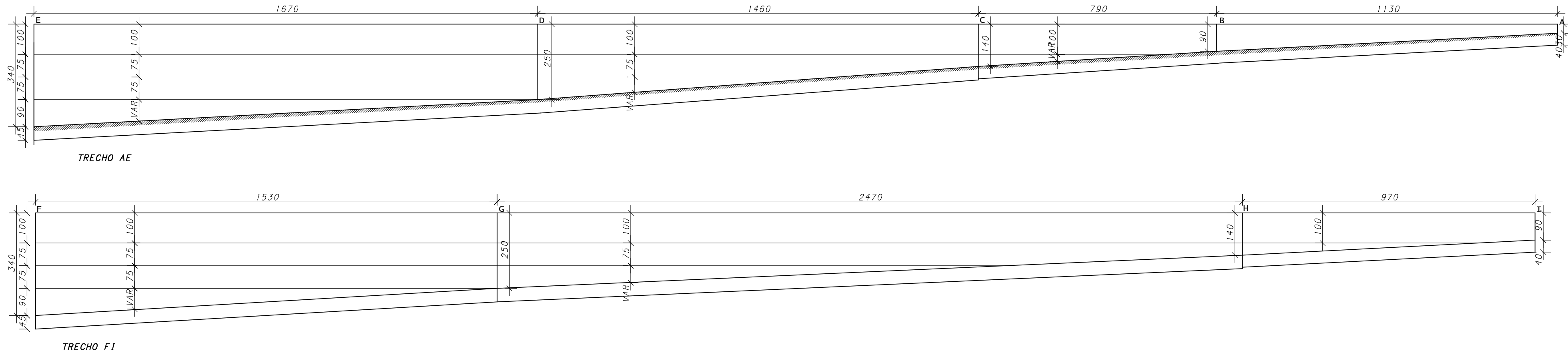
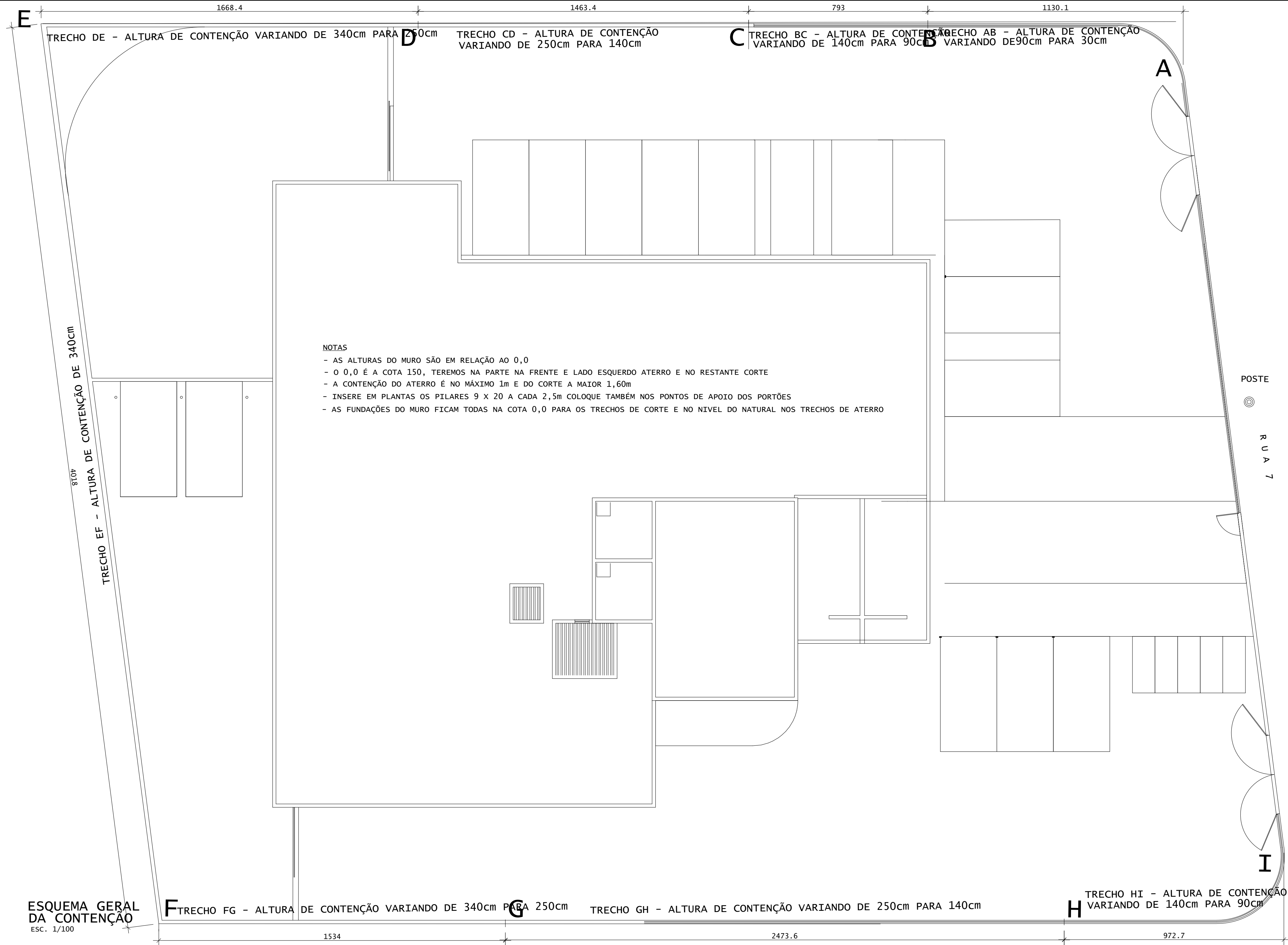


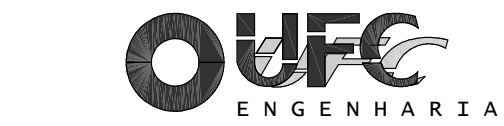
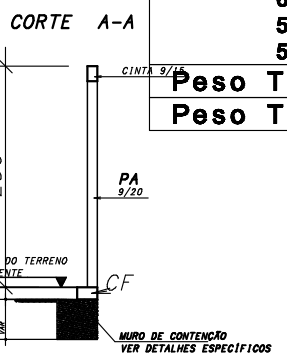
FLAVIO BARBOZA DE LIMA PL 201-GER-FOR-014-R00-PLT 09/12/2018 22:43:55



NOTAS:

- 1 - SEM PESAR ADEQUADO PERFEITAMENTE LÍMPIA, ADEQUADA, SEM JUNTAS VERTICAIS SUBSTANTIAIS;
- 2 - AS FUNDAMENTAÇÕES DEVERÃO FICAR EXPOSTAS POR UM CO- MÍNIMO DE CONCRETO COM ESPESURA MÍNIMA DE 10cm, DEPENDENDO DO MATERIAL UTILIZADO;
- 3 - FCM = 15MPa.

ACO	POS	BIT (mm)	QUANT	COMPRIMENTO UNIT (cm)	TOTAL (cm)
CINTA					
50A	1	6.3	48	1171	56208
60B	2	5	702	40	28080
CF					
50A	1	6.3	48	1171	56208
60B	2	4.2	702	52	36504
PA1					
(X56)	2	10	224	320	71680
50A	3	5	1288	94	121072
RESUMO AÇO CA 50-60					
ACO	BIT (mm)	COMPR (m)	PESO (kg)		
60B	4.2	365	40		
60B	5	1492	230		
50A	6.3	1124	276		
50A	10	717	442		
Peso Total			60B =	289	kg
Peso Total			50A =	716	kg



## ESTRUTURAL

FORUM DA COMARCA DE TRAIPU

MURO DE CONTENÇÃO  
MURO DE DIVISA  
CF / CINTA / PA1

PROJETADO: ROGERIO LYNK  
11/12/18 CREA: 178079408-7  
DESENHADO: J. LIMA 11/12/18

VERIFICADO: LUCIANO FERRAZ  
11/12/18 CREA: 020761672-9  
APROVADO: LUCIANO FERRAZ  
11/12/18 CREA: 020761672-9

N.º UFC: 4142-PE-EST-ARM-008-000  
SUBSTITUI A: 00

DESENHO: 201-GER-FOR-014-R00

ESCALA: Indicada

DATA: 11/12/2018

OBRA N.º: 2120

014

REV. N.º

00

ESCALA: Indicada