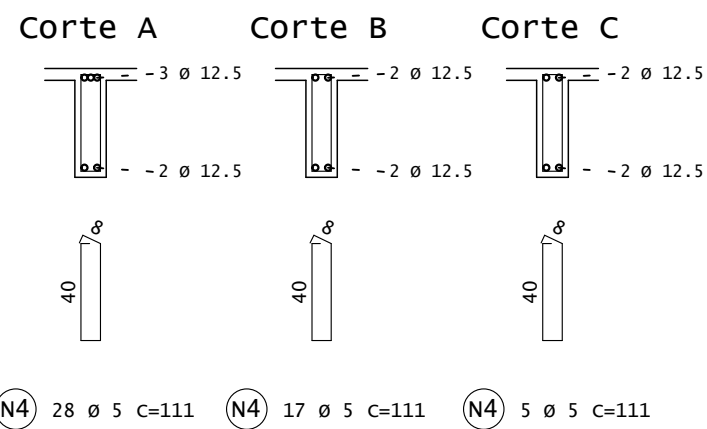
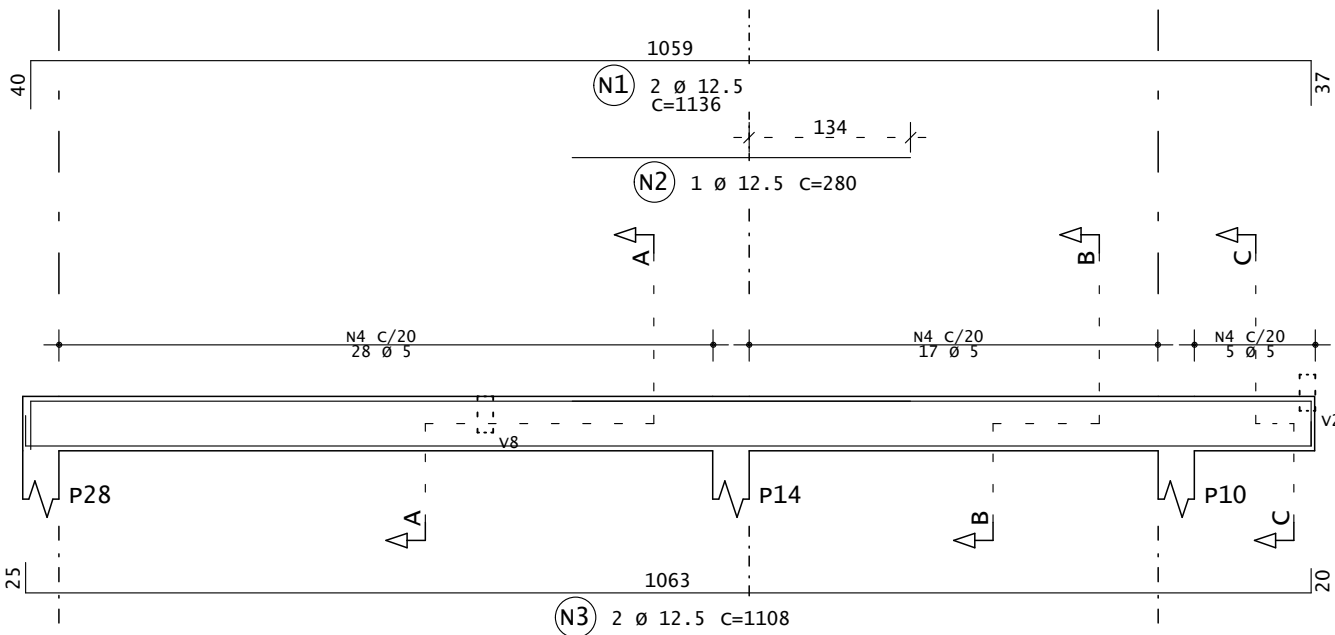
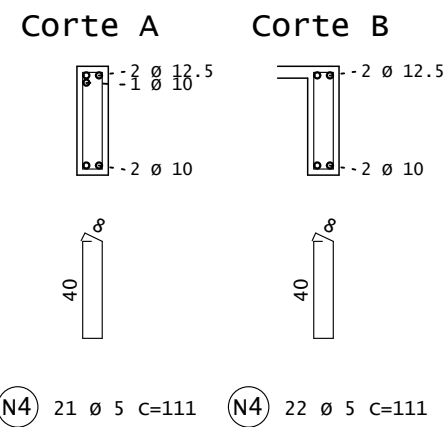
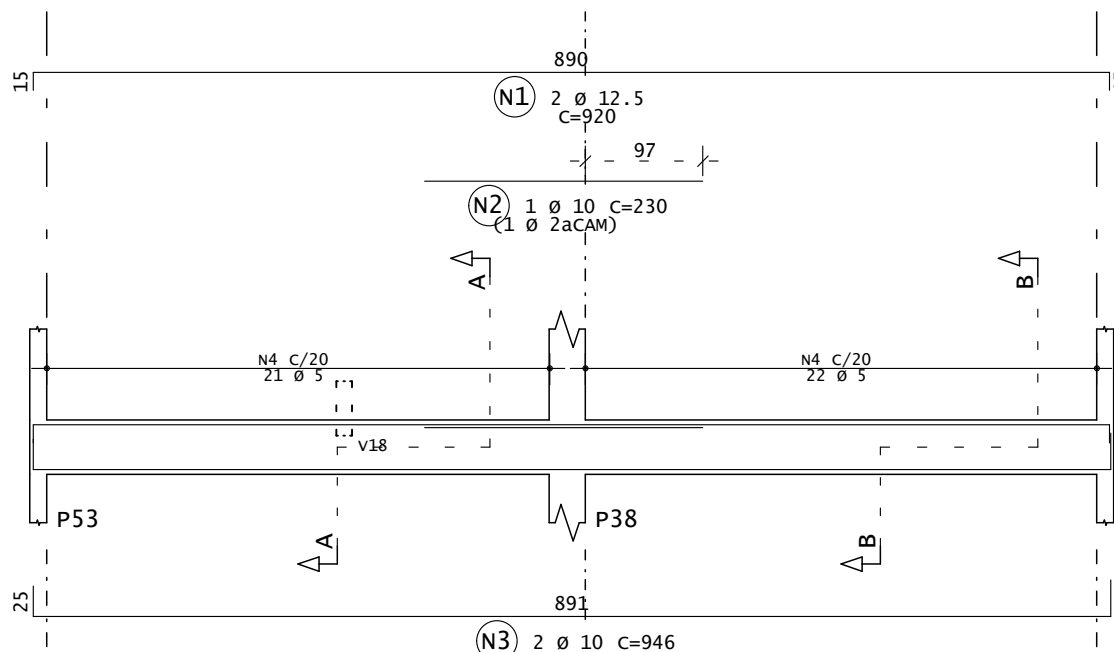


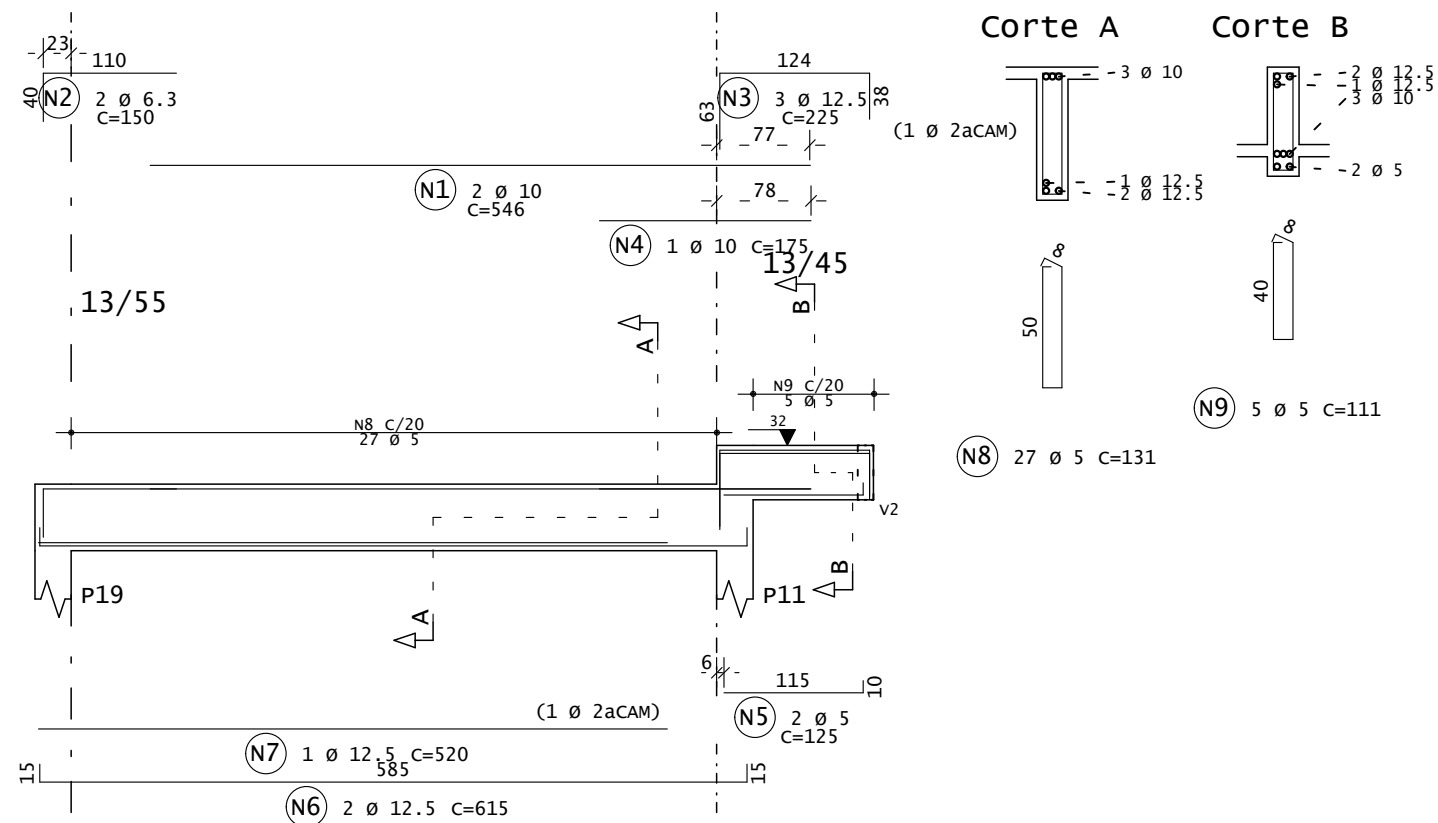
V46 13/45



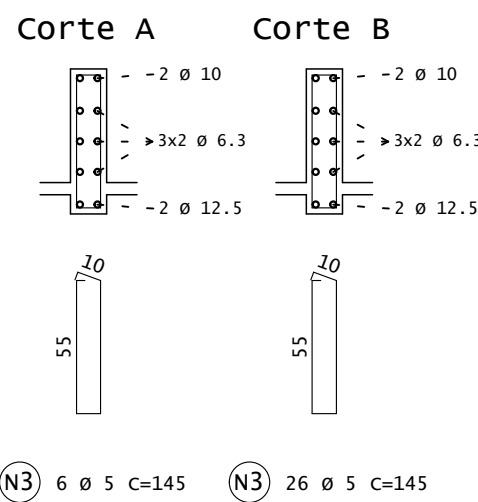
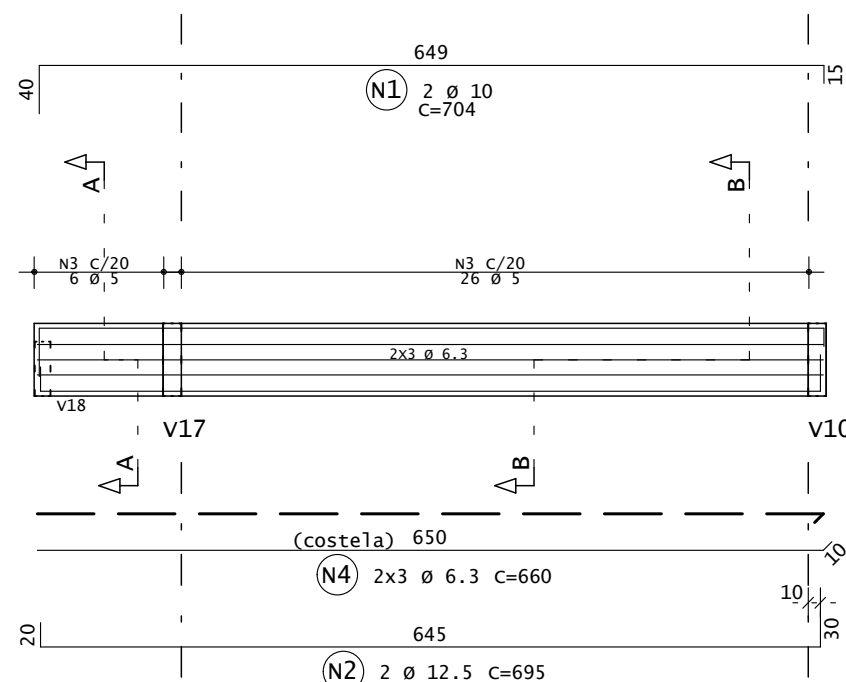
V47 13/45



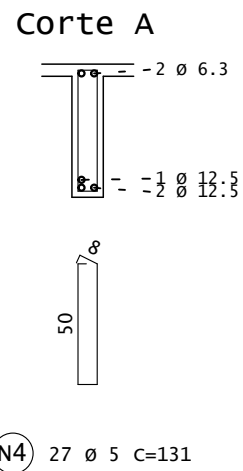
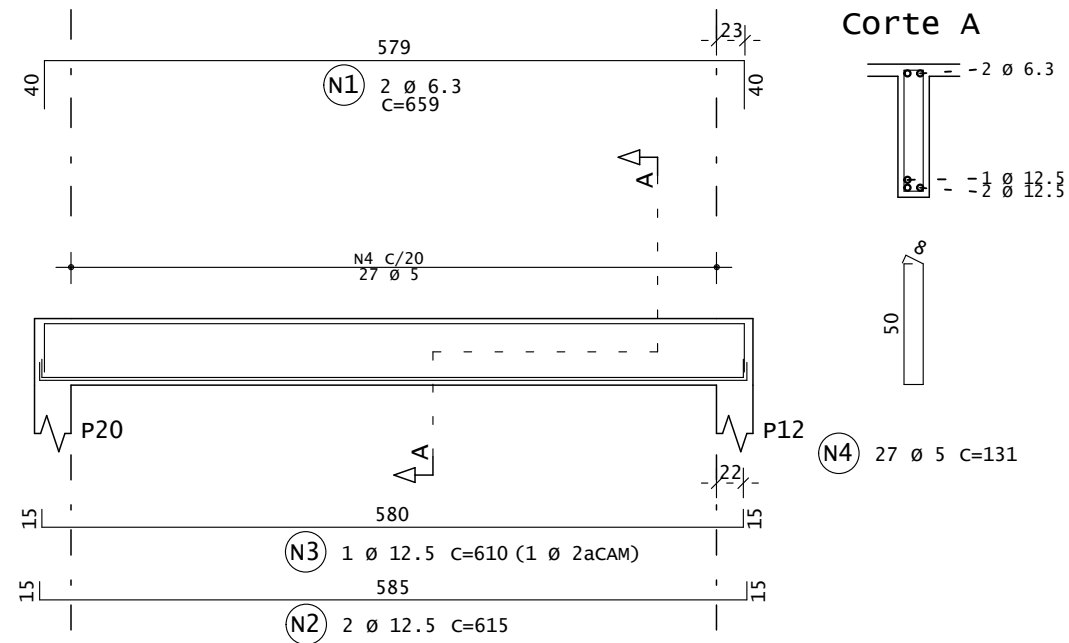
V48



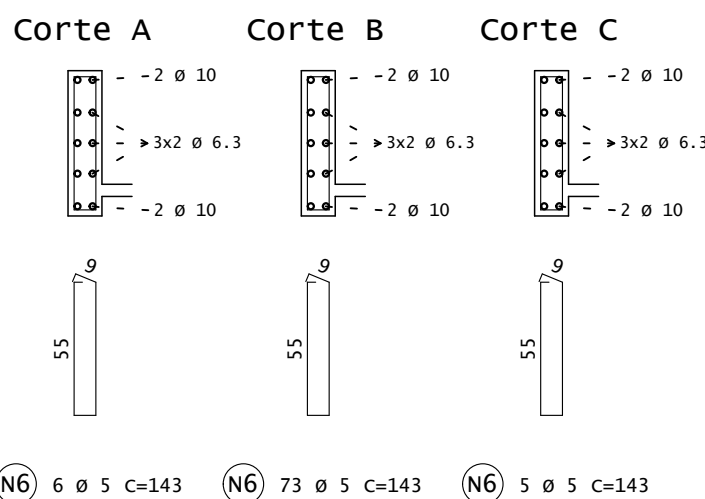
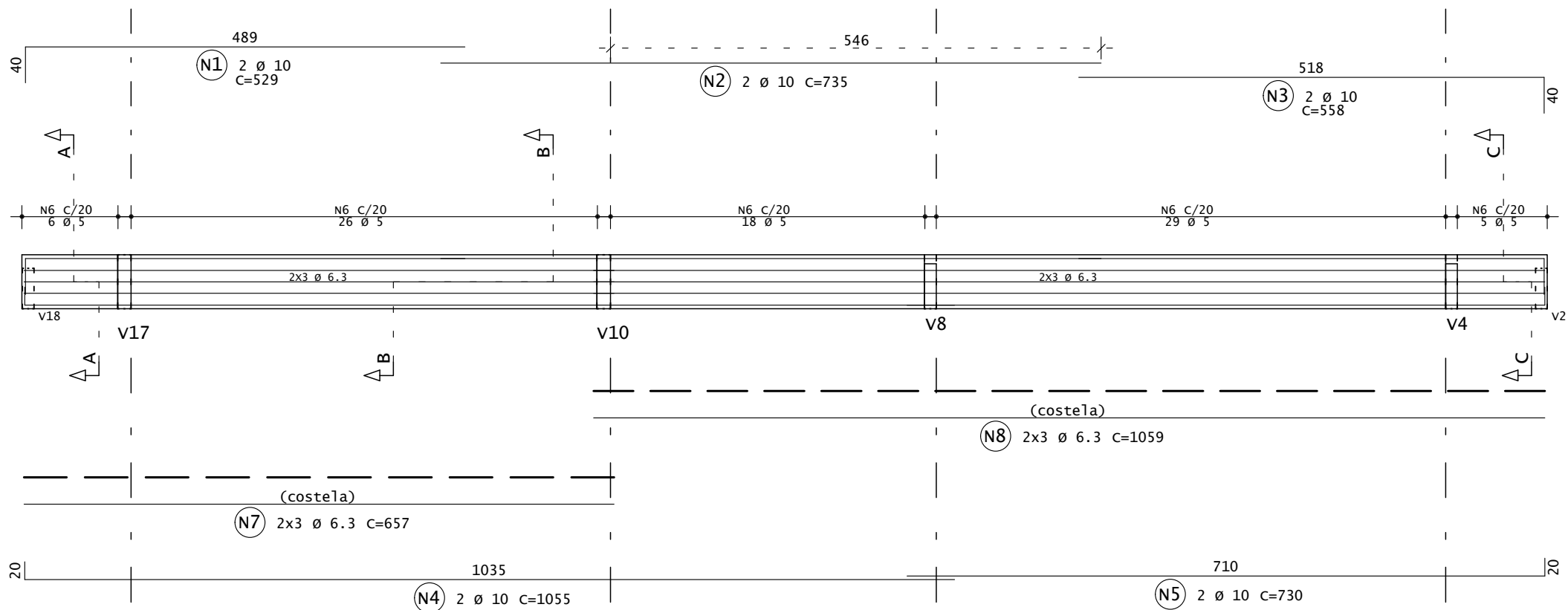
V49 15/60



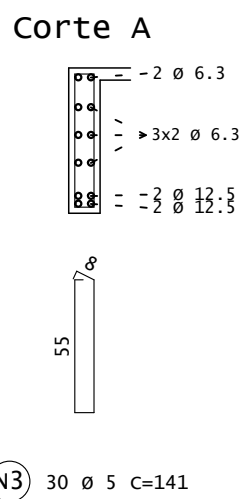
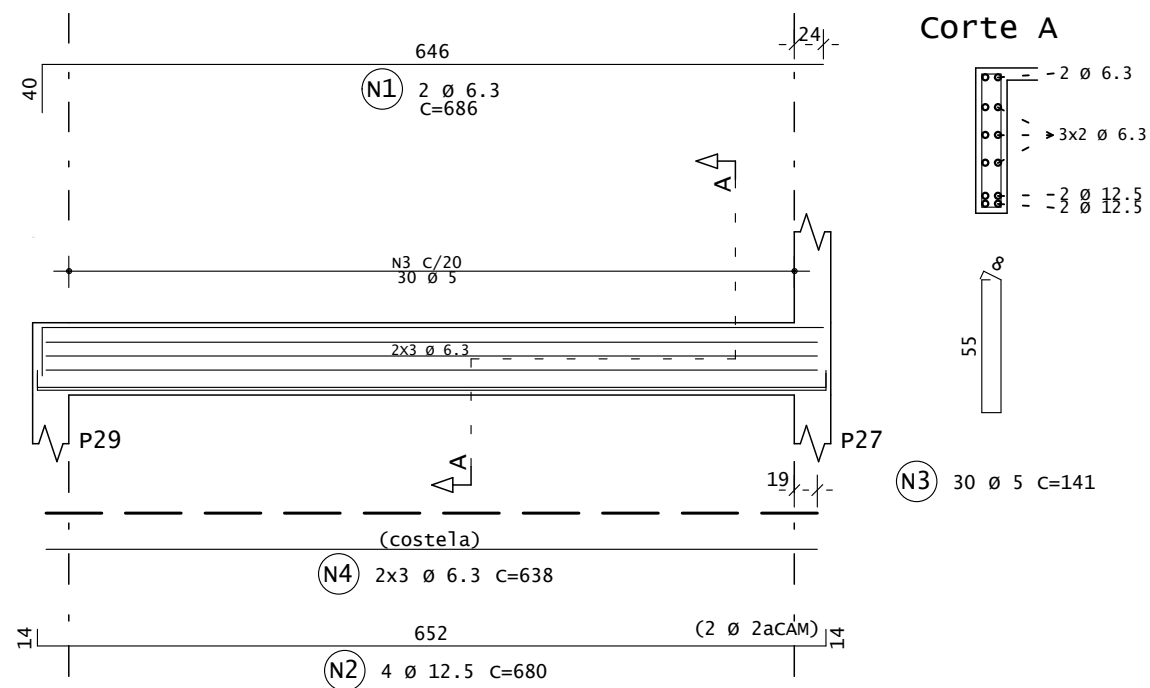
V50 13/55



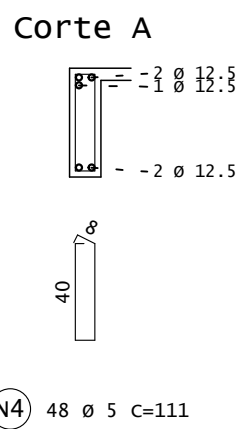
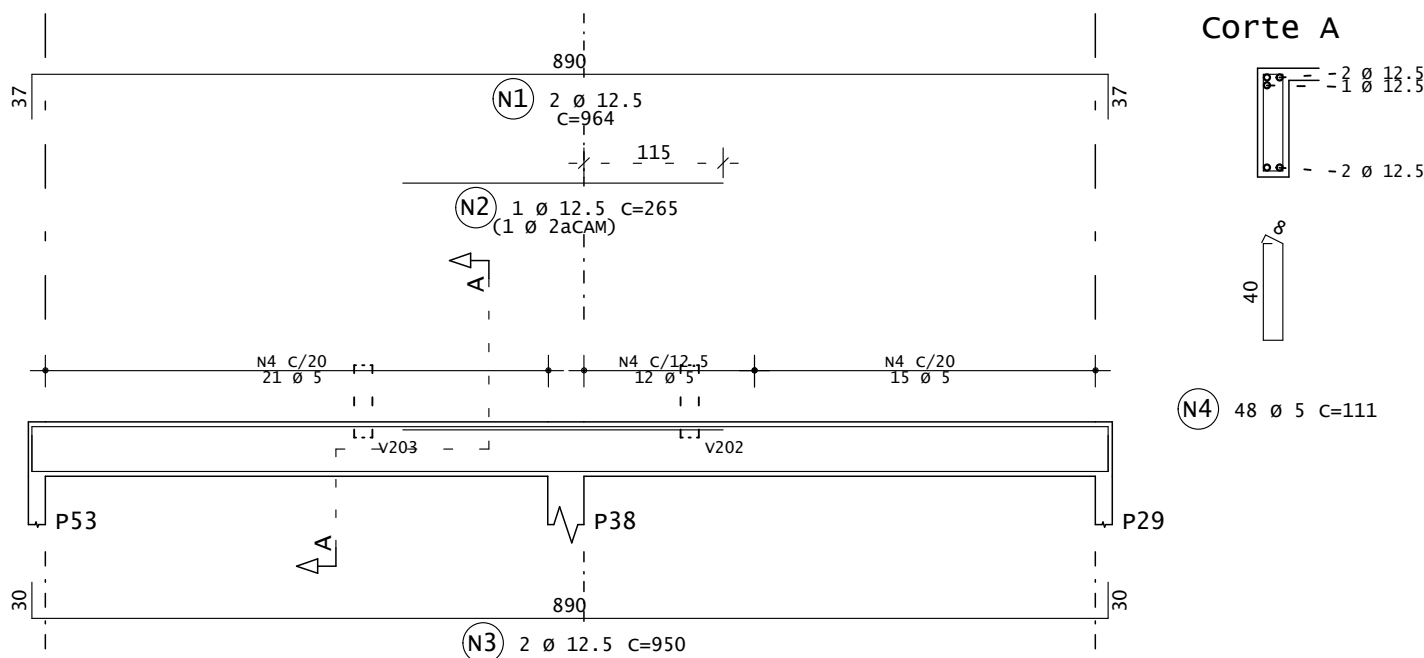
V51 14/60



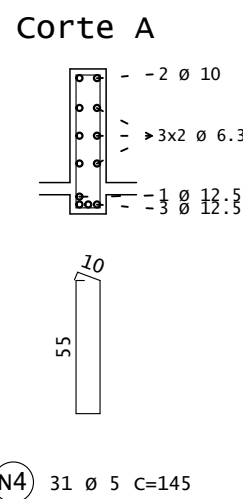
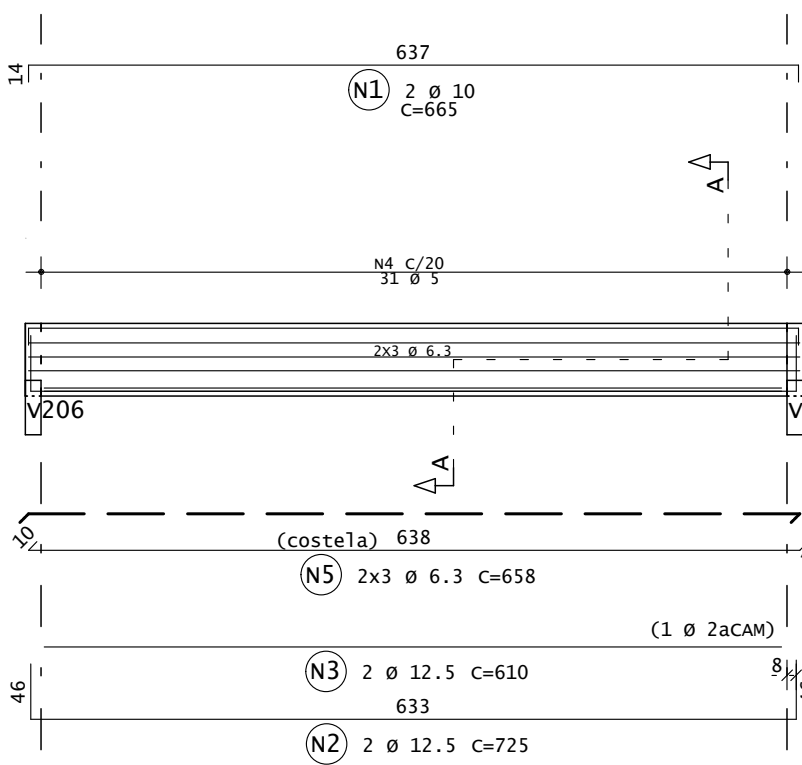
V201=V204 13/60



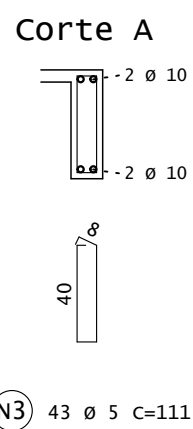
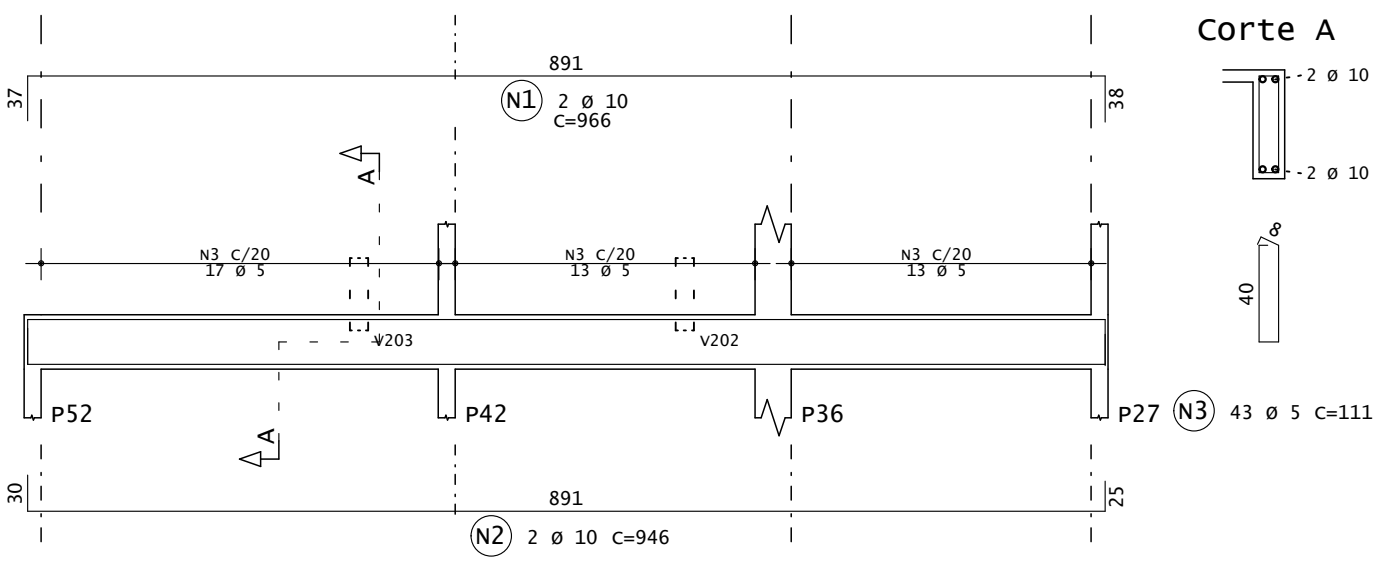
V206 13/45



V202=V203 15/60



V205 13/45



AÇO	POS	BIT (mm)	QUANT	COMPRIMENTO UNIT (cm)	TOTAL (cm)
V46					
50A	1	12.5	2	1136	2272
50A	2	12.5	1	280	280
50A	3	12.5	2	1108	2216
60B	4	5	50	111	5550
V47					
50A	1	12.5	2	920	1840
50A	2	10	1	230	230
50A	3	10	2	946	1892
60B	4	5	43	111	4773
V48					
50A	1	10	2	546	1092
50A	2	6.3	2	150	300
50A	3	12.5	3	225	675
50A	4	10	1	175	175
60B	5	5	2	125	250
50A	6	12.5	2	615	1230
50A	7	12.5	1	520	520
60B	8	5	27	131	3537
60B	9	5	5	111	555
V49					
50A	1	10	2	704	1408
50A	2	12.5	2	695	1390
60B	3	5	32	145	4640
50A	4	6.3	6	860	3960
V50					
50A	1	6.3	2	659	1318
50A	2	12.5	2	815	1230
50A	3	12.5	1	610	610
60B	4	5	27	131	3537
V51					
50A	1	10	2	529	1058
50A	2	10	2	735	1470
50A	3	10	2	558	1116
50A	4	10	2	1055	2110
50A	5	10	2	730	1460
60B	6	5	84	143	12012
50A	7	6.3	6	657	3942
50A	8	6.3	6	1059	6354
V201=V204 (X2)					
50A	1	6.3	4	886	2744
50A	2	12.5	8	980	5440
60B	3	5	60	141	8460
50A	4	6.3	12	638	7656
V202=V203 (X2)					
50A	1	10	4	865	2660
50A	2	12.5	4	725	2900
50A	3	12.5	4	610	2440
60B	4	5	62	145	8990
50A	5	6.3	12	658	7896
V205					
50A	1	10	2	966	1932
50A	2	10	2	946	1892
60B	3	5	43	111	4773
V206					
50A	1	12.5	2	984	1928
50A	2	12.5	1	265	265
50A	3	12.5	2	960	1900
60B	4	5	48	111	5328
RESUMO AÇO CA 50-60					
AÇO	BIT (mm)	COMPR (m)	PESO (kg)		
60B	5	624	96		
50A	6.3	342	84		
50A	10	185	114		
50A	12.5	271	261		
Peso Total			60B =	96 kg	
Peso Total			50A =	459 kg	



ESTRUTURAL

OBRA FORUM DA COMARCA DE TRAIPIU

TÍTULO ARMAÇÃO DE VIGAS
V46 / V47 / V48 / V49
V50 / V51 / V201=V204
V202=V203 / V205 / V206

PROJETADO: ROBERTO OLIVEIRA
11/12/18 CREA: 170070088-7

VERIFICADO: LUCIANO FERRAZ
11/12/18 CREA: 020763072-9

N.º UFC: 4142-PE-EST-ARM-008-R00

DESENHADO: F. LIMA 11/12/18

APROVADO: LUCIANO FERRAZ
11/12/18 CREA: 020763072-9

SUBSTITUI A:

DESENHO 201-PRI-VIG-009-R00

DATA 11/12/2018

OBRA N.º 2120

009

REV. N.º 00

ESCALA 1:63